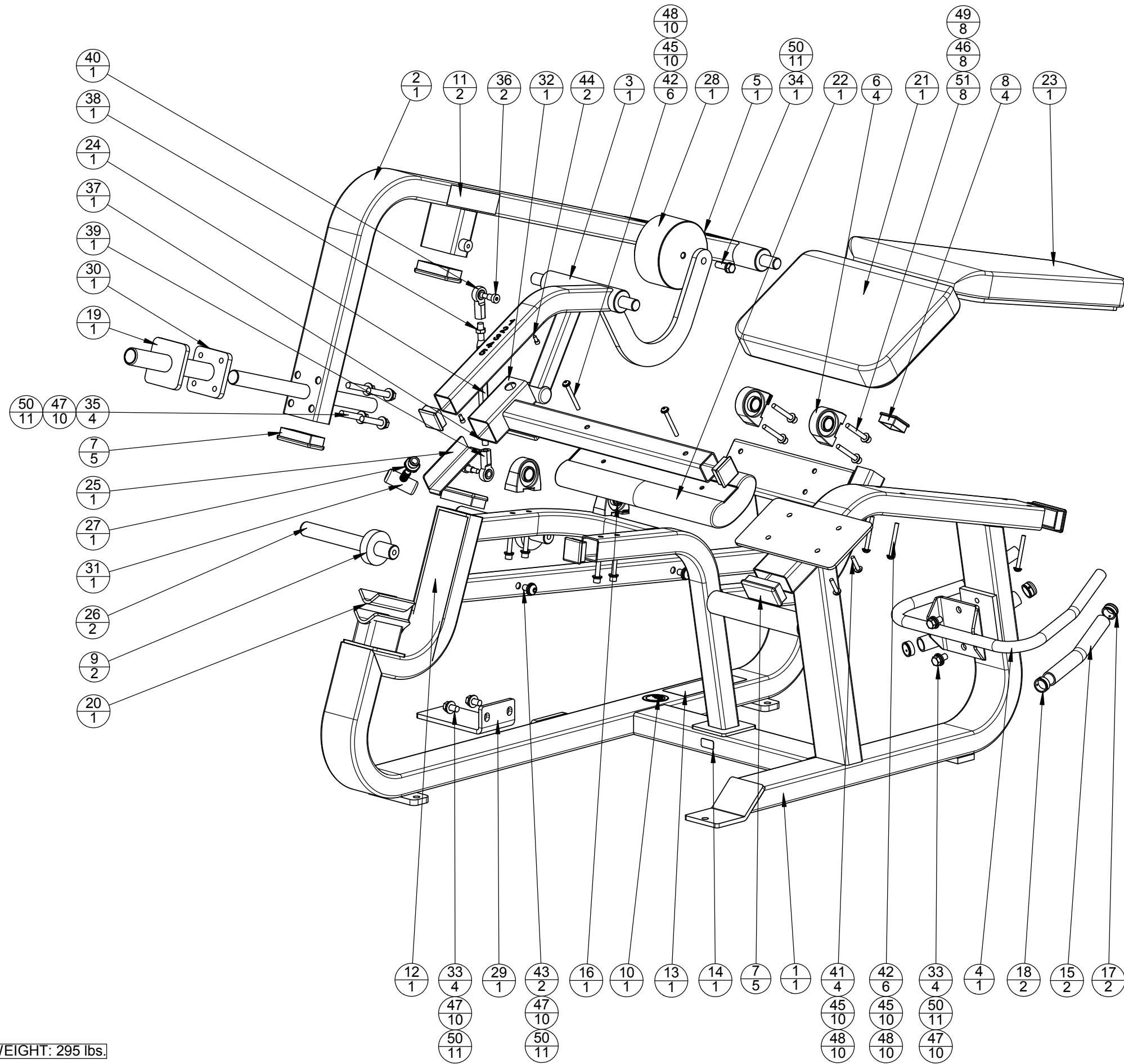


REVISIONS				
REV	ECN #	DESCRIPTION	REV. BY/DATE	APR. BY
A	-----	INITIAL RELEASE	04/1999	



ITEM NO.	QTY.	PART NO.	DESCRIPTION
1	1	561-SA-1	561 MAIN FRAME ASSY
2	1	561-SA-2	561 WEIGHT ARM ASSY
3	1	561-SA-3	561 LEG ARM ASSY
4	1	561-SA-4	561 HANDLE ASSY
5	1	AC0561B	LABEL, INSTRUCTION, "PRONE LEG CURL 561"
6	4	AC1026	PILLOW BLOCK BEARING 2 BOLT, TAPPED
7	5	AC1057	CAP, BLACK PLASTIC, 2 x 4
8	4	AC1058	CAP, BLACK PLASTIC, 2 x 2
9	2	AC1148	WEIGHT STACK BUMPER
10	1	AC1161	LABEL, ROUND, "MADE IN USA"
11	2	AC1170	LABEL, "FLITE", 1 3/4 x 6 1/4
12	1	AC1171	LABEL, "FLITE", 3 1/2 x 10 3/16
13	1	AC1183	LABEL, "WARNING, SERIOUS INJURY..."
14	1	AC1186	LABEL, FLITE SERIAL NUMBER
15	2	AC1226-12	RUBBERGRIP, DIA 1 x (10)
16	1	AC1232	LABEL, ROUND, "PIVOT"
17	2	AC218	HANDLE END CAP W/SET SCREWS, DIA 1"
18	2	AC219	HANDLE RETAINER RING W/SET SCREW, 1.040" I.D.
19	1	CP1033	CUT PIECE, CREPE, 7/16 x 4 x 4, 1 HOLE
20	1	CP1179	CREPE, 1/4 x 3 x 4 5/8
21	1	PD1137	PAD, 12 x 18, 4 HOLES
22	1	PD1141	PAD, 4 x 19, 2 HOLES
23	1	PD1143	PAD, CHEST, 9 x 17 x (23 15/16), 4 HOLES
24	1	PF1136	LINK ARM, 11", W/ THREADED ENDS
25	1	PF1553	STAINLESS STEEL ANGLE 1/8 x 1 1/2 x 1 1/2 x (6)
26	2	PF1725	STEEL BAR, RND, DIA 1 1/4 x (11), 1 HOLE TAPPED
27	1	PF1980	T-HANDLE INSERT
28	1	PF2009	STEEL BAR RND, DIA 6" x (3), 1 HOLE TAPPED
29	1	PF2219	STEEL BAR FLAT, 3/8 x 4 x (10), 1 BEND
30	1	SA1122	ASSY, WEIGHT HOLDER, 1 1/2 x (10 1/2)
31	1	SA1610	T-HANDLE ADJUSTER
32	1	SA1611	ASSY LEG ADJUSTMENT SLIDE
33	4	FA1011	BOLT, HEX HEAD, BLK, 1/2-13 x 1
34	1	FA1012	BOLT, HEX HEAD, BLK, 1/2-13 x 1 1/2
35	4	FA1025	BOLT, HEX HEAD, BLK, 1/2-13 x 2 3/4
36	2	FA1027	BOLT, SHOULDER, 3/8-16 x 1/2 x 5/8
37	1	FA1044	NUT, HEX, THIN, LEFT HAND THREAD, 1/2-20
38	1	FA1046	NUT, HEX, THIN, RIGHT HAND THREAD, 1/2-20
39	1	FA1063	ROD END, FEMALE, STEEL, ZINC, CAD, L.H.T.
40	1	FA1064	ROD END, FEMALE, STEEL, ZINC, CAD, R.H.T.
41	4	FA1072	BOLT, BUTTON HEAD, 5/16-18 x 1 1/2
42	6	FA1074	BOLT, BUTTON HEAD, 5/16-18 x 3
43	2	FA1075	BOLT, BUTTON HEAD, 1/2-13 x 1
44	2	FA1076	BOLT, SOCKET HEAD, 1/4-20 x 1/2
45	10	FA1106	WASHER, FLAT, 5/16 ID x 11/16 OD
46	8	FA1107	WASHER, FLAT, 3/8 ID x 13/16 OD
47	10	FA1109	WASHER, FLAT, 1/2 ID x 1 1/16 OD
48	10	FA1116	WASHER, SPLIT, 5/16 ID
49	8	FA1117	WASHER, SPLIT, 3/8 ID
50	11	FA1119	WASHER, SPLIT, 1/2 ID
51	8	FA1143	BOLT, SOCKET HEAD, 3/8-16 x 2 3/4

WEIGHT: 295 lbs.

UNLESS OTHERWISE SPECIFIED DIMENSIONS ARE IN INCHES

TOLERANCES ARE:
 FRACTIONS ± 1/32 DECIMALS .XX ± .01 ANGLES XXX ± .005

THIRD ANGLE PROJECTION

DO NOT SCALE DRAWING

FITNESS PRODUCTS INTERNATIONAL
ICARIAN ICARIAN FLITE ABENCH JADE STRETCH CENTER
 12660 BRANFORD ST. SUN VALLEY, CA. 91352

APPROVALS	DATE	TITLE	SCALE
DESIGNED BY RSG	10/98	FLITE LEG CURL	1:9
MODELED BY RSG	10/98		SHEET 1 OF 1
DRAWN BY JCV	04/99	SIZE B	REV A
APPROVED BY		DWG. NO. 561-EXP	

561 Flite Leg Curl

Part Number	Description	Bubble Number
CW561SA1-211	ASSY,FRAME,MAIN,FLT561,SKY WHITE	1.01
CW561SA1-221	ASSY,FRAME,MAIN,FLT561,BLACK	1.02
CW561SA1-231	ASSY,FRAME,MAIN,FLT561,RED	1.03
CW561SA1-241	ASSY,FRAME,MAIN,FLT561,PLAT SPRKLE	1.04
CW561SA1-251	ASSY,FRAME,MAIN,FLT561,SILVER	1.05
CW561SA1-261	ASSY,FRAME,MAIN,FLT561,BLUE	1.06
CW561SA1-271	ASSY,FRAME,MAIN,FLT561,CHARCOAL	1.07
CW561SA1-281	ASSY,FRAME,MAIN,FLT561,CATH GRAY	1.08
CW561SA1-291	ASSY,FRAME,MAIN,FLT561,SILVER VIEN	1.09
CW561SA1-311	ASSY,FRAME,MAIN,FLT561,STONE HG	1.11
CW561SA1-321	ASSY,FRAME,MAIN,FLT561,TITANIUM HG	1.12
CW561SA1-331	ASSY,FRAME,MAIN,FLT561,WHITE GLOSS	1.13
CW561SA1-341	ASSY,FRAME,MAIN,FLT561,BLACK ONYX	1.14
CW561SA1-351	ASSY,FRAME,MAIN,FLT561,LT. BRONZE	1.15
CW561SA1-361	ASSY,FRAME,MAIN,FLT561,SAPPHIRE BL	1.16
CW561SA2-211	ASSY,WEIGHT ARM,FLT561,SKY WHITE	2.01
CW561SA2-221	ASSY,WEIGHT ARM,FLT561,BLACK	2.02
CW561SA2-231	ASSY,WEIGHT ARM,FLT561,RED	2.03
CW561SA2-241	ASSY,WEIGHT ARM,FLT561,PLATINUM SPR	2.04
CW561SA2-251	ASSY,WEIGHT ARM,FLT561,SILVER	2.05
CW561SA2-261	ASSY,WEIGHT ARM,FLT561,BLUE	2.06
CW561SA2-271	ASSY,WEIGHT ARM,FLT561,CHARCOAL	2.07
CW561SA2-281	ASSY,WEIGHT ARM,FLT561,CATHEDRAL GR	2.08
CW561SA2-291	ASSY,WEIGHT ARM,FLT561,SILVER VIEN	2.09
CW561SA2-311	ASSY,WEIGHT ARM,FLT561,STONE HG	2.11
CW561SA2-321	ASSY,WEIGHT ARM,FLT561,TITANIUM HG	2.12
CW561SA2-331	ASSY,WEIGHT ARM,FLT561,WHITE GLOSS	2.13
CW561SA2-341	ASSY,WEIGHT ARM,FLT561,BLACK ONYX	2.14
CW561SA2-351	ASSY,WEIGHT ARM,FLT561,LIGHT BRONZE	2.15
CW561SA2-361	ASSY,WEIGHT ARM,FLT561,SAPPHIRE BLU	2.16
CW561SA3-211	ASSY,LEG ARM,FLT561,SKY WHITE	3.01
CW561SA3-221	ASSY,LEG ARM,FLT561,BLACK	3.02
CW561SA3-231	ASSY,LEG ARM,FLT561,RED	3.03
CW561SA3-241	ASSY,LEG ARM,FLT561,PLAT SPKLE	3.04
CW561SA3-251	ASSY,LEG ARM,FLT561,SILVER	3.05
CW561SA3-261	ASSY,LEG ARM,FLT561,BLUE	3.06
CW561SA3-271	ASSY,LEG ARM,FLT561,CHARCOAL	3.07
CW561SA3-281	ASSY,LEG ARM,FLT561,CATH GRY	3.08
CW561SA3-291	ASSY,LEG ARM,FLT561,SILVER VIEN	3.09
CW561SA3-311	ASSY,LEG ARM,FLT561,STONE HG	3.11
CW561SA3-321	ASSY,LEG ARM,FLT561,TITANIUM HG	3.12
CW561SA3-331	ASSY,LEG ARM,FLT561,WHITE GLOSS	3.13
CW561SA3-341	ASSY,LEG ARM,FLT561,BLACK ONYX	3.14
CW561SA3-351	ASSY,LEG ARM,FLT561,LIGHT BRONZE	3.15
CW561SA3-361	ASSY,LEG ARM,FLT561,SAPPHIRE BLUE	3.16
CW561SA4-211	ASSY,HANDLE ,FLT561,SKY WHITE	4.01
CW561SA4-221	ASSY,HANDLE ,FLT561,BLACK	4.02
CW561SA4-231	ASSY,HANDLE ,FLT561,RED	4.03
CW561SA4-241	ASSY,HANDLE ,FLT561,PLATINUM SPRKL	4.04

CW561SA4-251	ASSY,HANDLE ,FLT561,SILVER	4.05
CW561SA4-261	ASSY,HANDLE ,FLT561,BLUE	4.06
CW561SA4-271	ASSY,HANDLE ,FLT561,CHARCOAL	4.07
CW561SA4-281	ASSY,HANDLE ,FLT561,CATHEDRAL GREY	4.08
CW561SA4-291	ASSY,HANDLE ,FLT561,SILVER VIEN	4.09
CW561SA4-311	ASSY,HANDLE ,FLT561,STONE HG	4.11
CW561SA4-321	ASSY,HANDLE ,FLT561,TITANIUM HG	4.12
CW561SA4-331	ASSY,HANDLE ,FLT561,WHITE GLOSS	4.13
CW561SA4-341	ASSY,HANDLE ,FLT561,BLACK ONYX	4.14
CW561SA4-351	ASSY,HANDLE ,FLT561,LIGHT BRONZE	4.15
CW561SA4-361	ASSY,HANDLE ,FLT561,SAPPHIRE BLUE	4.16
CW11311-102	ENDCAP, REC TUBE, 2X4, BLK PLASTIC	5
CW12406-101	PILLOW BLOCK, BEARING, 2 BOLT	6
CW11311-103	ENDCAP, REC TUBE, 2X2, BLK PLASTIC	8
CW12402-101	BUMPER, WEIGHT STACK, BLK RUBBER	9
CW11311-103	ENDCAP, REC TUBE, 2X2, BLK PLASTIC	11
CWGR2610-000	GRIP,RUBBER, 1" DIA, 10"	15
CWCP1033-101	CUT PIECE, CREPE, 7/16 X 4 X 4, 1 H	17
CWAC219-902	HNDL RETAINER RNG, W/SS,1.040" I.D.	18
CWPD1137B-101	PAD,12X18,4HOLES,W/BP,BLACK	21.01
CWPD1137B-102	PAD,12X18,4HOLES,W/BP,RYL BL	21.02
CWPD1137B-103	PAD,12X18,4HOLES,W/BP,DVE GRY	21.03
CWPD1137B-104	PAD,12X18,4HOLES,W/BP,CROCUS	21.04
CWPD1137B-105	PAD,12X18,4HOLES,W/BP,GROTTO	21.05
CWPD1137B-106	PAD,12X18,4HOLES,W/BP,GRAPHITE	21.06
CWPD1137B-107	PAD,12X18,4HOLES,W/BP,RED	21.07
CWPD1137B-108	PAD,12X18,4HOLES,W/BP,CHN GRN	21.08
CWPD1137B-109	PAD,12X18,4HOLES,W/BP,TURQSE	21.09
CWPD1137B-110	PAD,12X18,4HOLES,W/BP,RASP	21.1
CWPD1137B-111	PAD,12X18,4HOLES,W/BP,PLUM	21.11
CWPD1137B-112	PAD,12X18,4HOLES,W/BP,REGIMENT	21.12
CWPD1137B-113	PAD,12X18,4HOLES,W/BP,SPC BLUE	21.13
CWPD1137B-115	PAD,12X18,4HOLES,W/BP,BLK LTHR	21.15
CWPD1137B-116	PAD,12X18,4HOLES,W/BP,NVBL LTH	21.16
CWPD1137B-117	PAD,12X18,4HOLES,W/BP,PUTTY	21.17
CWPD1137B-118	PAD,12X18,4HOLES,W/BP,IMPRL BL	21.18
CWPD1137B-119	PAD,12X18,4HOLES,W/BP,YEW GRN	21.19
CWPD1137B-120	PAD,12X18,4HOLES,W/BP,DSTY JD	21.2
CWPD1137B-121	PAD,12X18,4HOLES,W/BP,TER COT	21.21
CWPD1137B-122	PAD,12X18,4HOLES,W/BP,PAPRIKA	21.22
CWPD1137B-123	PAD,12X18,4HOLES,W/BP,ASH LTHR	21.23
CWPD1137B-124	PAD,12X18,4HOLES,W/BP,CERULEAN LTHR	21.24
CWPD1137B-125	PAD,12X18,4HOLES,W/BP,CHARCOAL LTHR	21.25
CWPD1137B-126	PAD,12X18,4HOLES,W/BP,HUNTER LTHR	21.26
CWPD1137B-127	PAD,12X18,4HOLES,W/BP,MOSS LTHR	21.27
CWPD1137B-128	PAD,12X18,4HOLES,W/BP,SPICE LTHR	21.28
CWPD1137B-129	PAD,12X18,4HOLES,W/BP,TOMATO LTHR	21.29
CWPD1141J-101	PAD,4X19,2HOLES,W/BP,BLACK, W/SLIP	22.01
CWPD1141J-102	PAD,4X19,2HOLES,W/BP,RYL BL, W/SLIP	22.02
CWPD1141J-103	PAD,4X19,2HOLES,W/BP,DVE GRY, W/SLI	22.03
CWPD1141J-104	PAD,4X19,2HOLES,W/BP,CROCUS, W/SLIP	22.04

CWPD1141J-105	PAD,4X19,2HOLES,W/BP,GROTTO, W/SLIP	22.05
CWPD1141J-106	PAD,4X19,2HOLES,W/BP,GRAPHITE, W/SL	22.06
CWPD1141J-107	PAD,4X19,2HOLES,W/BP,RED, W/SLIP	22.07
CWPD1141J-108	PAD,4X19,2HOLES,W/BP,CHN GRN, W/SLI	22.08
CWPD1141J-109	PAD,4X19,2HOLES,W/BP,TURQSE,W/SLIP	22.09
CWPD1141J-110	PAD,4X19,2HOLES,W/BP,RASP,W/SLIP	22.1
CWPD1141J-111	PAD,4X19,2HOLES,W/BP,PLUM, W/SLIP	22.11
CWPD1141J-112	PAD,4X19,2HOLES,W/BP,REGIMENT,W/SLI	22.12
CWPD1141J-113	PAD,4X19,2HOLES,W/BP,SPC BLUE,W/SLI	22.13
CWPD1141J-115	PAD,4X19,2HOLES,W/BP,BLK LTHR,W/SLI	22.15
CWPD1141J-116	PAD,4X19,2HOLES,W/BP,NVBL LTH,W/SLI	22.16
CWPD1141J-117	PAD,4X19,2HOLES,W/BP,PUTTY,W/SLIP	22.17
CWPD1141J-118	PAD,4X19,2HOLES,W/BP,IMPRL BL,W/SLI	22.18
CWPD1141J-119	PAD,4X19,2HOLES,W/BP,YEW GRN,W/SLIP	22.19
CWPD1141J-120	PAD,4X19,2HOLES,W/BP,DSTY JD,W/SLIP	22.2
CWPD1141J-121	PAD,4X19,2HOLES,W/BP,TER COT,W/SLIP	22.21
CWPD1141J-122	PAD,4X19,2HOLES,W/BP,PAPRIKA,W/SLIP	22.22
CWPD1141J-123	PAD,4X19,2HOLES,W/BP,ASH LTHR,W/SLI	22.23
CWPD1141J-124	PAD,4X19,2HOLES,W/BP,CERULEAN LTHR,	22.24
CWPD1141J-125	PAD,4X19,2HOLES,W/BP,CHARCOAL LTHR,	22.25
CWPD1141J-126	PAD,4X19,2HOLES,W/BP,HUNTER LTHR,W/	22.26
CWPD1141J-127	PAD,4X19,2HOLES,W/BP,MOSS LTHR,W/SL	22.27
CWPD1141J-128	PAD,4X19,2HOLES,W/BP,SPICE LTHR,W/S	22.28
CWPD1141J-129	PAD,4X19,2HOLES,W/BP,TOMATO LTHR,W/	22.29
CWPD1143B-101	PAD,9X17X23-15/16,4HLS,W/BP,BLACK	23.01
CWPD1143B-102	PAD,9X17X23-15/16,4HLS,W/BP,RYL BL	23.02
CWPD1143B-103	PAD,9X17X23-15/16,4HLS,W/BP,DVE GRY	23.03
CWPD1143B-104	PAD,9X17X23-15/16,4HLS,W/BP,CROCUS	23.04
CWPD1143B-105	PAD,9X17X23-15/16,4HLS,W/BP,GROTTO	23.05
CWPD1143B-106	PAD,9X17X23-15/16,4HLS,W/BP,GRPHT	23.06
CWPD1143B-107	PAD,9X17X23-15/16,4HLS,W/BP,RED	23.07
CWPD1143B-108	PAD,9X17X23-15/16,4HLS,W/BP,CHN GRN	23.08
CWPD1143B-109	PAD,9X17X23-15/16,4HLS,W/BP,TURQSE	23.09
CWPD1143B-110	PAD,9X17X23-15/16,4HLS,W/BP,RASP	23.1
CWPD1143B-111	PAD,9X17X23-15/16,4HLS,W/BP,PLUM	23.11
CWPD1143B-112	PAD,9X17X23-15/16,4HLS,W/BP,REGMNT	23.12
CWPD1143B-113	PAD,9X17X23-15/16,4HLS,W/BP,SPC BLU	23.13
CWPD1143B-115	PAD,9X17X23-15/16,4HLS,W/BP,BLK LTH	23.15
CWPD1143B-116	PAD,9X17X23-15/16,4HLS,W/BP,NVBL LT	23.16
CWPD1143B-117	PAD,9X17X23-15/16,4HLS,W/BP,PUTTY	23.17
CWPD1143B-118	PAD,9X17X23-15/16,4HL,W/BP,IMPRL BL	23.18
CWPD1143B-119	PAD,9X17X23-15/16,4HLS,W/BP,YEW GRN	23.19
CWPD1143B-120	PAD,9X17X23-15/16,4HLS,W/BP,DSTY JD	23.2
CWPD1143B-121	PAD,9X17X23-15/16,4HLS,W/BP,TER COT	23.21
CWPD1143B-122	PAD,9X17X23-15/16,4HLS,W/BP,PAPRIKA	23.22
CWPD1143B-123	PAD,9X17X23-15/16,4HL,W/BP,ASH LTHR	23.23
CWPD1143B-124	PAD,9X17X23.937,4HL,W/BP,CERULN LTH	23.24
CWPD1143B-125	PAD,9X17X23.937,4HL,W/BP,CHARCL LTH	23.25
CWPD1143B-126	PAD,9X17X23.937,4HL,W/BP,HUNTER LTH	23.26
CWPD1143B-127	PAD,9X17X23.937,4HL,W/BP,MOSS LTHR	23.27
CWPD1143B-129	PAD,9X17X23.937,4HL,W/BP,TOMATO LTH	23.29

CWPF1136-731	LINK ARM, 11", W/ THRD ENDS, 712, B	24
CWPF1553-901	ANGLE,STAINLESS STEEL, 1/8 X 1 1/2	25
CWPF1725-741	BAR,STEEL RND, DIA 1 1/4" X (11), 1	26
CWPF3450-721	BAR, RND, DIA 6" X 3, 1 HOLE TAPPE	28
CWPF2219-721	BAR,STEEL, FLAT, 3/8 X 4 X (10), 1	29
CWSA1122-741	ASSY,WEIGHT,HOLDER,1.5 X 10.5,CLEAR	30
CWSA1610-731	WELDMENT, T-HANDLE ADJUSTER, BLACK	31
CWSA1611-211	ASSY,LEG ADJUSTMENT,SKY WHITE	32.01
CWSA1611-221	ASSY,LEG ADJUSTMENT,BLACK	32.02
CWSA1611-231	ASSY,LEG ADJUSTMENT,RED	32.03
CWSA1611-241	ASSY,LEG ADJUSTMENT,PLAT SPKLE	32.04
CWSA1611-251	ASSY,LEG ADJUSTMENT,SILVER	32.05
CWSA1611-261	ASSY,LEG ADJUSTMENT,BLUE	32.06
CWSA1611-271	ASSY,LEG ADJUSTMENT,CHARCOAL	32.07
CWSA1611-281	ASSY,LEG ADJUSTMENT,CATH GRY	32.08
CWSA1611-291	ASSY,LEG ADJUSTMENT,SILVER VIEN	32.09
CWSA1611-311	ASSY,LEG ADJUSTMENT,STONE HG	32.11
CWSA1611-321	ASSY,LEG ADJUSTMENT,TITANIUM HG	32.12
CWSA1611-331	ASSY,LEG ADJUSTMENT,WHITE GLOSS	32.13
CWSA1611-341	ASSY,LEG ADJUSTMENT,BLACK ONYX	32.14
CWSA1611-351	ASSY,LEG ADJUSTMENT,LIGHT BRONZE	32.15
CWSA1611-361	ASSY,LEG ADJUSTMENT,SAPPHIRE BLUE	32.16
CWHCYN050-100	SCREW,HEX HEAD,BLK XYLAN,1/2-13 X 1	33
CWHCYN050-150	SCREW, HEX HEAD, BLK XYLAN, 1/2-13	34
CWHCYN050-275	SCREW, HEX HEAD, BLK XYLAN, 1/2-13	35
CWRANN038-063	BOLT, SHOULDER, 3/8-16 X 1/2 X 5/8	36
CWKBEYN050-031	NUT, HEX, THIN, LEFT HAND THREAD,	37
CWKRYN050-031	NUT, HEX THIN, UNF, 1/2-20, BLK XYL	38
CWPF1980-731	T-HANDLE INSERT, BLK ZN	39
CWCLFA1064-741	ROD END, FEMALE, STEEL, ZINC, CAD,	40
CWTAYN031-150	SCREW, BUTTON HEAD, BLK XYLAN,5/16	41
CWTAYN031-300	SCREW, BUTTON HEAD, BLK XYLAN,5/16	42
CWTAYN050-100	SCREW, BUTTON HEAD, BLK XYLAN, 1/2	43
CWCAYN025-050	SCREW, SOCKET HEAD, BLK XYLAN	44
CWWBKN031-007	WASHER, FLAT, TYPE A, SAE, 5/16 ID	45
CWWBKN038-007	WASHER, FLAT, TYPE A, SAE, 3/8 ID	46
CWWBKN050-010	WASHER, FLAT, TYPE A, SAE, 1/2 ID X	47
CWWALYN031-008	WASHER, SPLIT, 5/16 ID, BL	48
CWWALYN038-009	WASHER, SPLIT, 3/8 ID, BLK XYLAN	49
CWWALYN050-013	WASHER, SPLIT, 1/2 ID, BLK XYLAN	50
CWCAYN038-275	SCREW, SOCKET HEAD, BLK XYLAN, 3/	51
CW31759-101	LABEL,SMALL PRECOR USA ICARIAN LINE	52
CW30010-101	LABEL,WARNING STRENGTH	54
CW30074-101	LABEL,INSTRUCTION,FLT561	55
CW30013-104	CUT PIECE, CREPE, 1/4 X 3 X 4 5/8	56
CWAC218-901	HANDLE END CAP W/SET SCREWS, DIA 1"	57
CWCLFA1063-741	ROD END, FEMALE, STEEL, ZINC, CAD,	58
CWAC1177-101	FLOOR PROTECTOR, RUBBER, 4.563 X 4.	501
CWAC1178-101	FLOOR PROTECTOR, RUBBER, 2.563 X 6.	502
CWAC1181-101	FLOOR PROTECTOR, RUBBER, 4.563 X 4.	503

561 Flite Leg Curl

Part Number	Description	Bubble Number
CW561SA1-211	ASSY,FRAME,MAIN,FLT561,SKY WHITE	1.01
CW561SA1-221	ASSY,FRAME,MAIN,FLT561,BLACK	1.02
CW561SA1-231	ASSY,FRAME,MAIN,FLT561,RED	1.03
CW561SA1-241	ASSY,FRAME,MAIN,FLT561,PLAT SPRKLE	1.04
CW561SA1-251	ASSY,FRAME,MAIN,FLT561,SILVER	1.05
CW561SA1-261	ASSY,FRAME,MAIN,FLT561,BLUE	1.06
CW561SA1-271	ASSY,FRAME,MAIN,FLT561,CHARCOAL	1.07
CW561SA1-281	ASSY,FRAME,MAIN,FLT561,CATH GRAY	1.08
CW561SA1-291	ASSY,FRAME,MAIN,FLT561,SILVER VIEN	1.09
CW561SA1-311	ASSY,FRAME,MAIN,FLT561,STONE HG	1.11
CW561SA1-321	ASSY,FRAME,MAIN,FLT561,TITANIUM HG	1.12
CW561SA1-331	ASSY,FRAME,MAIN,FLT561,WHITE GLOSS	1.13
CW561SA1-341	ASSY,FRAME,MAIN,FLT561,BLACK ONYX	1.14
CW561SA1-351	ASSY,FRAME,MAIN,FLT561,LT. BRONZE	1.15
CW561SA1-361	ASSY,FRAME,MAIN,FLT561,SAPPHIRE BL	1.16
CW561SA2-211	ASSY,WEIGHT ARM,FLT561,SKY WHITE	2.01
CW561SA2-221	ASSY,WEIGHT ARM,FLT561,BLACK	2.02
CW561SA2-231	ASSY,WEIGHT ARM,FLT561,RED	2.03
CW561SA2-241	ASSY,WEIGHT ARM,FLT561,PLATINUM SPR	2.04
CW561SA2-251	ASSY,WEIGHT ARM,FLT561,SILVER	2.05
CW561SA2-261	ASSY,WEIGHT ARM,FLT561,BLUE	2.06
CW561SA2-271	ASSY,WEIGHT ARM,FLT561,CHARCOAL	2.07
CW561SA2-281	ASSY,WEIGHT ARM,FLT561,CATHEDRAL GR	2.08
CW561SA2-291	ASSY,WEIGHT ARM,FLT561,SILVER VIEN	2.09
CW561SA2-311	ASSY,WEIGHT ARM,FLT561,STONE HG	2.11
CW561SA2-321	ASSY,WEIGHT ARM,FLT561,TITANIUM HG	2.12
CW561SA2-331	ASSY,WEIGHT ARM,FLT561,WHITE GLOSS	2.13
CW561SA2-341	ASSY,WEIGHT ARM,FLT561,BLACK ONYX	2.14
CW561SA2-351	ASSY,WEIGHT ARM,FLT561,LIGHT BRONZE	2.15
CW561SA2-361	ASSY,WEIGHT ARM,FLT561,SAPPHIRE BLU	2.16
CW561SA3-211	ASSY,LEG ARM,FLT561,SKY WHITE	3.01
CW561SA3-221	ASSY,LEG ARM,FLT561,BLACK	3.02
CW561SA3-231	ASSY,LEG ARM,FLT561,RED	3.03
CW561SA3-241	ASSY,LEG ARM,FLT561,PLAT SPKLE	3.04
CW561SA3-251	ASSY,LEG ARM,FLT561,SILVER	3.05
CW561SA3-261	ASSY,LEG ARM,FLT561,BLUE	3.06
CW561SA3-271	ASSY,LEG ARM,FLT561,CHARCOAL	3.07
CW561SA3-281	ASSY,LEG ARM,FLT561,CATH GRY	3.08
CW561SA3-291	ASSY,LEG ARM,FLT561,SILVER VIEN	3.09
CW561SA3-311	ASSY,LEG ARM,FLT561,STONE HG	3.11
CW561SA3-321	ASSY,LEG ARM,FLT561,TITANIUM HG	3.12
CW561SA3-331	ASSY,LEG ARM,FLT561,WHITE GLOSS	3.13
CW561SA3-341	ASSY,LEG ARM,FLT561,BLACK ONYX	3.14
CW561SA3-351	ASSY,LEG ARM,FLT561,LIGHT BRONZE	3.15
CW561SA3-361	ASSY,LEG ARM,FLT561,SAPPHIRE BLUE	3.16
CW561SA4-211	ASSY,HANDLE ,FLT561,SKY WHITE	4.01
CW561SA4-221	ASSY,HANDLE ,FLT561,BLACK	4.02
CW561SA4-231	ASSY,HANDLE ,FLT561,RED	4.03
CW561SA4-241	ASSY,HANDLE ,FLT561,PLATINUM SPRKL	4.04

CW561SA4-251	ASSY,HANDLE ,FLT561,SILVER	4.05
CW561SA4-261	ASSY,HANDLE ,FLT561,BLUE	4.06
CW561SA4-271	ASSY,HANDLE ,FLT561,CHARCOAL	4.07
CW561SA4-281	ASSY,HANDLE ,FLT561,CATHEDRAL GREY	4.08
CW561SA4-291	ASSY,HANDLE ,FLT561,SILVER VIEN	4.09
CW561SA4-311	ASSY,HANDLE ,FLT561,STONE HG	4.11
CW561SA4-321	ASSY,HANDLE ,FLT561,TITANIUM HG	4.12
CW561SA4-331	ASSY,HANDLE ,FLT561,WHITE GLOSS	4.13
CW561SA4-341	ASSY,HANDLE ,FLT561,BLACK ONYX	4.14
CW561SA4-351	ASSY,HANDLE ,FLT561,LIGHT BRONZE	4.15
CW561SA4-361	ASSY,HANDLE ,FLT561,SAPPHIRE BLUE	4.16
CW11311-102	ENDCAP, REC TUBE, 2X4, BLK PLASTIC	5
CW12406-101	PILLOW BLOCK, BEARING, 2 BOLT	6
CW11311-103	ENDCAP, REC TUBE, 2X2, BLK PLASTIC	8
CW12402-101	BUMPER, WEIGHT STACK, BLK RUBBER	9
CW11311-103	ENDCAP, REC TUBE, 2X2, BLK PLASTIC	11
CWGR2610-000	GRIP,RUBBER, 1" DIA, 10"	15
CWCP1033-101	CUT PIECE, CREPE, 7/16 X 4 X 4, 1 H	17
CWAC219-902	HNDL RETAINER RNG, W/SS,1.040" I.D.	18
CWPD1137B-101	PAD,12X18,4HOLES,W/BP,BLACK	21.01
CWPD1137B-102	PAD,12X18,4HOLES,W/BP,RYL BL	21.02
CWPD1137B-103	PAD,12X18,4HOLES,W/BP,DVE GRY	21.03
CWPD1137B-104	PAD,12X18,4HOLES,W/BP,CROCUS	21.04
CWPD1137B-105	PAD,12X18,4HOLES,W/BP,GROTTO	21.05
CWPD1137B-106	PAD,12X18,4HOLES,W/BP,GRAPHITE	21.06
CWPD1137B-107	PAD,12X18,4HOLES,W/BP,RED	21.07
CWPD1137B-108	PAD,12X18,4HOLES,W/BP,CHN GRN	21.08
CWPD1137B-109	PAD,12X18,4HOLES,W/BP,TURQSE	21.09
CWPD1137B-110	PAD,12X18,4HOLES,W/BP,RASP	21.1
CWPD1137B-111	PAD,12X18,4HOLES,W/BP,PLUM	21.11
CWPD1137B-112	PAD,12X18,4HOLES,W/BP,REGIMENT	21.12
CWPD1137B-113	PAD,12X18,4HOLES,W/BP,SPC BLUE	21.13
CWPD1137B-115	PAD,12X18,4HOLES,W/BP,BLK LTHR	21.15
CWPD1137B-116	PAD,12X18,4HOLES,W/BP,NVBL LTH	21.16
CWPD1137B-117	PAD,12X18,4HOLES,W/BP,PUTTY	21.17
CWPD1137B-118	PAD,12X18,4HOLES,W/BP,IMPRL BL	21.18
CWPD1137B-119	PAD,12X18,4HOLES,W/BP,YEW GRN	21.19
CWPD1137B-120	PAD,12X18,4HOLES,W/BP,DSTY JD	21.2
CWPD1137B-121	PAD,12X18,4HOLES,W/BP,TER COT	21.21
CWPD1137B-122	PAD,12X18,4HOLES,W/BP,PAPRIKA	21.22
CWPD1137B-123	PAD,12X18,4HOLES,W/BP,ASH LTHR	21.23
CWPD1137B-124	PAD,12X18,4HOLES,W/BP,CERULEAN LTHR	21.24
CWPD1137B-125	PAD,12X18,4HOLES,W/BP,CHARCOAL LTHR	21.25
CWPD1137B-126	PAD,12X18,4HOLES,W/BP,HUNTER LTHR	21.26
CWPD1137B-127	PAD,12X18,4HOLES,W/BP,MOSS LTHR	21.27
CWPD1137B-128	PAD,12X18,4HOLES,W/BP,SPICE LTHR	21.28
CWPD1137B-129	PAD,12X18,4HOLES,W/BP,TOMATO LTHR	21.29
CWPD1141J-101	PAD,4X19,2HOLES,W/BP,BLACK, W/SLIP	22.01
CWPD1141J-102	PAD,4X19,2HOLES,W/BP,RYL BL, W/SLIP	22.02
CWPD1141J-103	PAD,4X19,2HOLES,W/BP,DVE GRY, W/SLI	22.03
CWPD1141J-104	PAD,4X19,2HOLES,W/BP,CROCUS, W/SLIP	22.04

CWPD1141J-105	PAD,4X19,2HOLES,W/BP,GROTTO, W/SLIP	22.05
CWPD1141J-106	PAD,4X19,2HOLES,W/BP,GRAPHITE, W/SL	22.06
CWPD1141J-107	PAD,4X19,2HOLES,W/BP,RED, W/SLIP	22.07
CWPD1141J-108	PAD,4X19,2HOLES,W/BP,CHN GRN, W/SLI	22.08
CWPD1141J-109	PAD,4X19,2HOLES,W/BP,TURQSE,W/SLIP	22.09
CWPD1141J-110	PAD,4X19,2HOLES,W/BP,RASP,W/SLIP	22.1
CWPD1141J-111	PAD,4X19,2HOLES,W/BP,PLUM, W/SLIP	22.11
CWPD1141J-112	PAD,4X19,2HOLES,W/BP,REGIMENT,W/SLI	22.12
CWPD1141J-113	PAD,4X19,2HOLES,W/BP,SPC BLUE,W/SLI	22.13
CWPD1141J-115	PAD,4X19,2HOLES,W/BP,BLK LTHR,W/SLI	22.15
CWPD1141J-116	PAD,4X19,2HOLES,W/BP,NVBL LTH,W/SLI	22.16
CWPD1141J-117	PAD,4X19,2HOLES,W/BP,PUTTY,W/SLIP	22.17
CWPD1141J-118	PAD,4X19,2HOLES,W/BP,IMPRL BL,W/SLI	22.18
CWPD1141J-119	PAD,4X19,2HOLES,W/BP,YEW GRN,W/SLIP	22.19
CWPD1141J-120	PAD,4X19,2HOLES,W/BP,DSTY JD,W/SLIP	22.2
CWPD1141J-121	PAD,4X19,2HOLES,W/BP,TER COT,W/SLIP	22.21
CWPD1141J-122	PAD,4X19,2HOLES,W/BP,PAPRIKA,W/SLIP	22.22
CWPD1141J-123	PAD,4X19,2HOLES,W/BP,ASH LTHR,W/SLI	22.23
CWPD1141J-124	PAD,4X19,2HOLES,W/BP,CERULEAN LTHR,	22.24
CWPD1141J-125	PAD,4X19,2HOLES,W/BP,CHARCOAL LTHR,	22.25
CWPD1141J-126	PAD,4X19,2HOLES,W/BP,HUNTER LTHR,W/	22.26
CWPD1141J-127	PAD,4X19,2HOLES,W/BP,MOSS LTHR,W/SL	22.27
CWPD1141J-128	PAD,4X19,2HOLES,W/BP,SPICE LTHR,W/S	22.28
CWPD1141J-129	PAD,4X19,2HOLES,W/BP,TOMATO LTHR,W/	22.29
CWPD1143B-101	PAD,9X17X23-15/16,4HLS,W/BP,BLACK	23.01
CWPD1143B-102	PAD,9X17X23-15/16,4HLS,W/BP,RYL BL	23.02
CWPD1143B-103	PAD,9X17X23-15/16,4HLS,W/BP,DVE GRY	23.03
CWPD1143B-104	PAD,9X17X23-15/16,4HLS,W/BP,CROCUS	23.04
CWPD1143B-105	PAD,9X17X23-15/16,4HLS,W/BP,GROTTO	23.05
CWPD1143B-106	PAD,9X17X23-15/16,4HLS,W/BP,GRPHT	23.06
CWPD1143B-107	PAD,9X17X23-15/16,4HLS,W/BP,RED	23.07
CWPD1143B-108	PAD,9X17X23-15/16,4HLS,W/BP,CHN GRN	23.08
CWPD1143B-109	PAD,9X17X23-15/16,4HLS,W/BP,TURQSE	23.09
CWPD1143B-110	PAD,9X17X23-15/16,4HLS,W/BP,RASP	23.1
CWPD1143B-111	PAD,9X17X23-15/16,4HLS,W/BP,PLUM	23.11
CWPD1143B-112	PAD,9X17X23-15/16,4HLS,W/BP,REGMNT	23.12
CWPD1143B-113	PAD,9X17X23-15/16,4HLS,W/BP,SPC BLU	23.13
CWPD1143B-115	PAD,9X17X23-15/16,4HLS,W/BP,BLK LTH	23.15
CWPD1143B-116	PAD,9X17X23-15/16,4HLS,W/BP,NVBL LT	23.16
CWPD1143B-117	PAD,9X17X23-15/16,4HLS,W/BP,PUTTY	23.17
CWPD1143B-118	PAD,9X17X23-15/16,4HL,W/BP,IMPRL BL	23.18
CWPD1143B-119	PAD,9X17X23-15/16,4HLS,W/BP,YEW GRN	23.19
CWPD1143B-120	PAD,9X17X23-15/16,4HLS,W/BP,DSTY JD	23.2
CWPD1143B-121	PAD,9X17X23-15/16,4HLS,W/BP,TER COT	23.21
CWPD1143B-122	PAD,9X17X23-15/16,4HLS,W/BP,PAPRIKA	23.22
CWPD1143B-123	PAD,9X17X23-15/16,4HL,W/BP,ASH LTHR	23.23
CWPD1143B-124	PAD,9X17X23.937,4HL,W/BP,CERULN LTH	23.24
CWPD1143B-125	PAD,9X17X23.937,4HL,W/BP,CHARCL LTH	23.25
CWPD1143B-126	PAD,9X17X23.937,4HL,W/BP,HUNTER LTH	23.26
CWPD1143B-127	PAD,9X17X23.937,4HL,W/BP,MOSS LTHR	23.27
CWPD1143B-129	PAD,9X17X23.937,4HL,W/BP,TOMATO LTH	23.29

CWPF1136-731	LINK ARM, 11", W/ THRD ENDS, 712, B	24
CWPF1553-901	ANGLE,STAINLESS STEEL, 1/8 X 1 1/2	25
CWPF1725-741	BAR,STEEL RND, DIA 1 1/4" X (11), 1	26
CWPF3450-721	BAR, RND, DIA 6" X 3, 1 HOLE TAPPE	28
CWPF2219-721	BAR,STEEL, FLAT, 3/8 X 4 X (10), 1	29
CWSA1122-741	ASSY,WEIGHT,HOLDER,1.5 X 10.5,CLEAR	30
CWSA1610-731	WELDMENT, T-HANDLE ADJUSTER, BLACK	31
CWSA1611-211	ASSY,LEG ADJUSTMENT,SKY WHITE	32.01
CWSA1611-221	ASSY,LEG ADJUSTMENT,BLACK	32.02
CWSA1611-231	ASSY,LEG ADJUSTMENT,RED	32.03
CWSA1611-241	ASSY,LEG ADJUSTMENT,PLAT SPKLE	32.04
CWSA1611-251	ASSY,LEG ADJUSTMENT,SILVER	32.05
CWSA1611-261	ASSY,LEG ADJUSTMENT,BLUE	32.06
CWSA1611-271	ASSY,LEG ADJUSTMENT,CHARCOAL	32.07
CWSA1611-281	ASSY,LEG ADJUSTMENT,CATH GRY	32.08
CWSA1611-291	ASSY,LEG ADJUSTMENT,SILVER VIEN	32.09
CWSA1611-311	ASSY,LEG ADJUSTMENT,STONE HG	32.11
CWSA1611-321	ASSY,LEG ADJUSTMENT,TITANIUM HG	32.12
CWSA1611-331	ASSY,LEG ADJUSTMENT,WHITE GLOSS	32.13
CWSA1611-341	ASSY,LEG ADJUSTMENT,BLACK ONYX	32.14
CWSA1611-351	ASSY,LEG ADJUSTMENT,LIGHT BRONZE	32.15
CWSA1611-361	ASSY,LEG ADJUSTMENT,SAPPHIRE BLUE	32.16
CWHCYN050-100	SCREW,HEX HEAD,BLK XYLAN,1/2-13 X 1	33
CWHCYN050-150	SCREW, HEX HEAD, BLK XYLAN, 1/2-13	34
CWHCYN050-275	SCREW, HEX HEAD, BLK XYLAN, 1/2-13	35
CWRANN038-063	BOLT, SHOULDER, 3/8-16 X 1/2 X 5/8	36
CWKBEYN050-031	NUT, HEX, THIN, LEFT HAND THREAD,	37
CWKRYN050-031	NUT, HEX THIN, UNF, 1/2-20, BLK XYL	38
CWPF1980-731	T-HANDLE INSERT, BLK ZN	39
CWCLFA1064-741	ROD END, FEMALE, STEEL, ZINC, CAD,	40
CWTAYN031-150	SCREW, BUTTON HEAD, BLK XYLAN,5/16	41
CWTAYN031-300	SCREW, BUTTON HEAD, BLK XYLAN,5/16	42
CWTAYN050-100	SCREW, BUTTON HEAD, BLK XYLAN, 1/2	43
CWCAYN025-050	SCREW, SOCKET HEAD, BLK XYLAN	44
CWWBKN031-007	WASHER, FLAT, TYPE A, SAE, 5/16 ID	45
CWWBKN038-007	WASHER, FLAT, TYPE A, SAE, 3/8 ID	46
CWWBKN050-010	WASHER, FLAT, TYPE A, SAE, 1/2 ID X	47
CWWALYN031-008	WASHER, SPLIT, 5/16 ID, BL	48
CWWALYN038-009	WASHER, SPLIT, 3/8 ID, BLK XYLAN	49
CWWALYN050-013	WASHER, SPLIT, 1/2 ID, BLK XYLAN	50
CWCAYN038-275	SCREW, SOCKET HEAD, BLK XYLAN, 3/	51
CW31759-101	LABEL,SMALL PRECOR USA ICARIAN LINE	52
CW30010-101	LABEL,WARNING STRENGTH	54
CW30074-101	LABEL,INSTRUCTION,FLT561	55
CW30013-104	CUT PIECE, CREPE, 1/4 X 3 X 4 5/8	56
CWAC218-901	HANDLE END CAP W/SET SCREWS, DIA 1"	57
CWCLFA1063-741	ROD END, FEMALE, STEEL, ZINC, CAD,	58
CWAC1177-101	FLOOR PROTECTOR, RUBBER, 4.563 X 4.	501
CWAC1178-101	FLOOR PROTECTOR, RUBBER, 2.563 X 6.	502
CWAC1181-101	FLOOR PROTECTOR, RUBBER, 4.563 X 4.	503